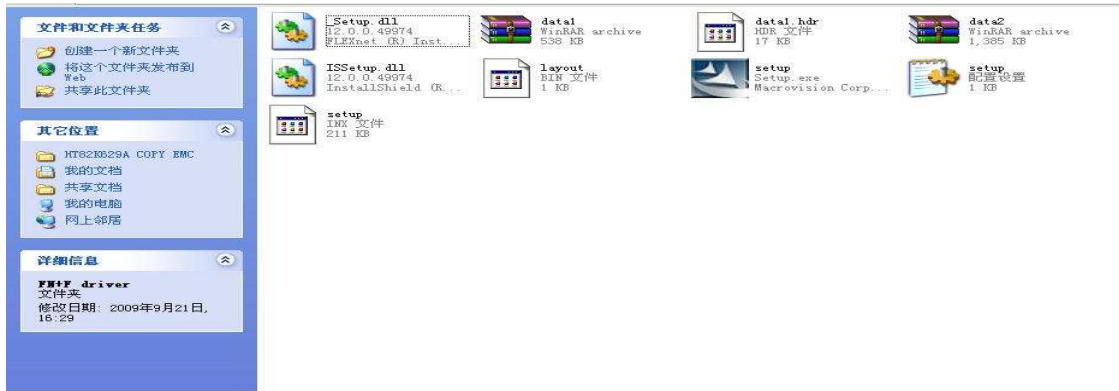
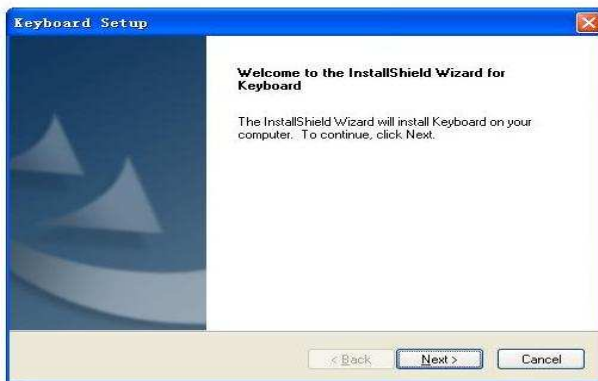


LM I220 Installation Guide

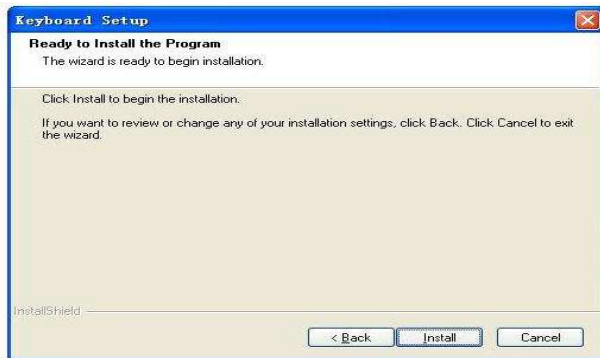
- 1 Connect the keyboard with PC.
2. Download the driver, unpack the file into a folder, eg LMi220.
- 3 Open the folder, double click the 'SETUP.exe' to install driver.



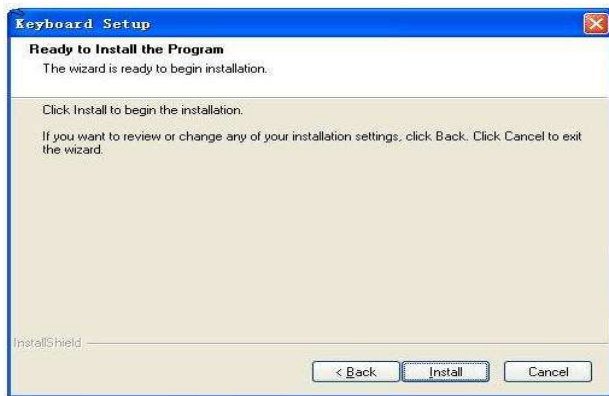
- 4 Follow the instruction to complete installation.



5. Click 'NEXT' to go to next step.



6. Click 'NEXT' to go to next step.



7 Click 'Install' to begin the installation.



8 Click Finish' to restart the system.