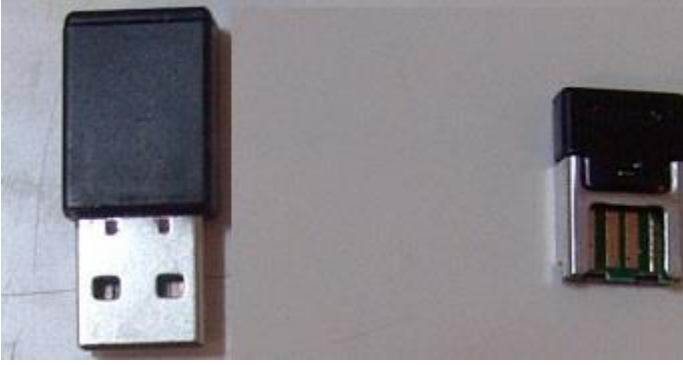




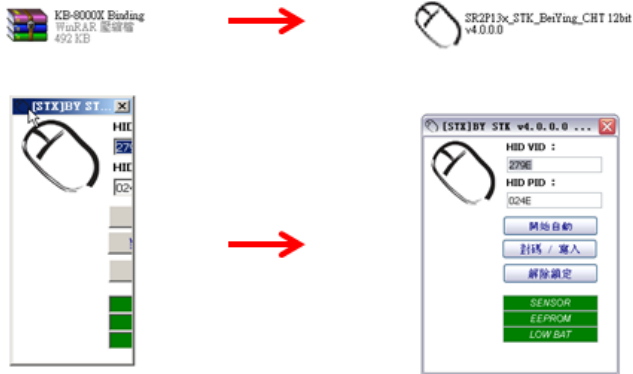
KYE Corporation Service Advisory			No. of DOC DOC-2017K001																
<b>Released Date</b> 2017/10/26	<b>Version</b> V2	<b>Model</b> KB-8000X	<b>Affected P/N</b> All																
<b>Title</b> KB-8000X Keyboard or Mouse is not working.			<b>Referred DOC</b>																
<b>Category</b> ( ) Hardware Related ( ) S/W Related ( ) Field Capture ( ) Purge Notice ( ) Special Notice (V) Others	<b>Location</b> ( V ) WW ASP ( V ) WW Distributor	<b>Effective Date</b> 2017/05/16																	
<b>Description:</b> KB-8000X has a chance to lose the data code between keyboard, mouse and receiver, which causes devices does not work.																			
<b>Action:</b> Please bind the Keyboard and mouse frequency again with binding program and pairing method.																			
<b>Steps:</b> Download the binding program from the Genius website. <a href="http://www.geniusnet.com">www.geniusnet.com</a>																			
<b>Downloads</b> Drivers / Application																			
<table border="1"><thead><tr><th>Description</th><th>Version</th><th>Operating system</th><th></th></tr></thead><tbody><tr><td>KB-8000X For displaying Numlock/Caps lock/Scroll lock</td><td>V1.3.13.</td><td>Windows 10,Windows 8,Windows 7,Windows Vista,Windows XP</td><td><a href="#">Download</a></td></tr><tr><td>KB-8000X binding program(Only for mouse LED is red color)</td><td></td><td>Windows 10,Windows 8,Windows 7,Windows Vista,Windows XP</td><td><a href="#">Download</a></td></tr><tr><td>KB-8000X ioCenter for displaying Capital or Lowercase on screen(also supports Win10+)</td><td>V1.3.13</td><td>Windows 10,Windows 8,Windows 7,Windows Vista,Windows XP</td><td><a href="#">Download</a></td></tr></tbody></table>				Description	Version	Operating system		KB-8000X For displaying Numlock/Caps lock/Scroll lock	V1.3.13.	Windows 10,Windows 8,Windows 7,Windows Vista,Windows XP	<a href="#">Download</a>	KB-8000X binding program(Only for mouse LED is red color)		Windows 10,Windows 8,Windows 7,Windows Vista,Windows XP	<a href="#">Download</a>	KB-8000X ioCenter for displaying Capital or Lowercase on screen(also supports Win10+)	V1.3.13	Windows 10,Windows 8,Windows 7,Windows Vista,Windows XP	<a href="#">Download</a>
Description	Version	Operating system																	
KB-8000X For displaying Numlock/Caps lock/Scroll lock	V1.3.13.	Windows 10,Windows 8,Windows 7,Windows Vista,Windows XP	<a href="#">Download</a>																
KB-8000X binding program(Only for mouse LED is red color)		Windows 10,Windows 8,Windows 7,Windows Vista,Windows XP	<a href="#">Download</a>																
KB-8000X ioCenter for displaying Capital or Lowercase on screen(also supports Win10+)	V1.3.13	Windows 10,Windows 8,Windows 7,Windows Vista,Windows XP	<a href="#">Download</a>																

## To bind the mouse.(Only for mouse LED is red color and receiver is bigger one)



There are two kinds of receivers.

### Step1: Open the software



Click mouse pattern in a full view.

### Step 2: Put in battery, then plug Receiver into USB port. (Do not switch ON).

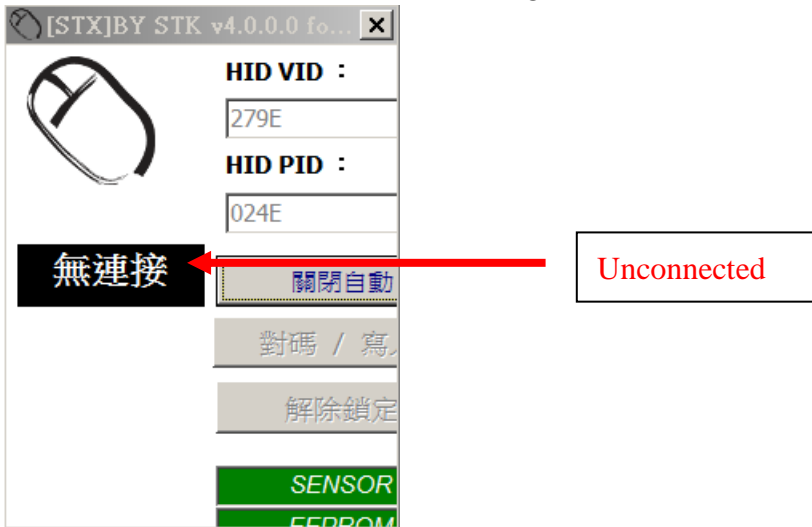


Steps3:Return to soft program.



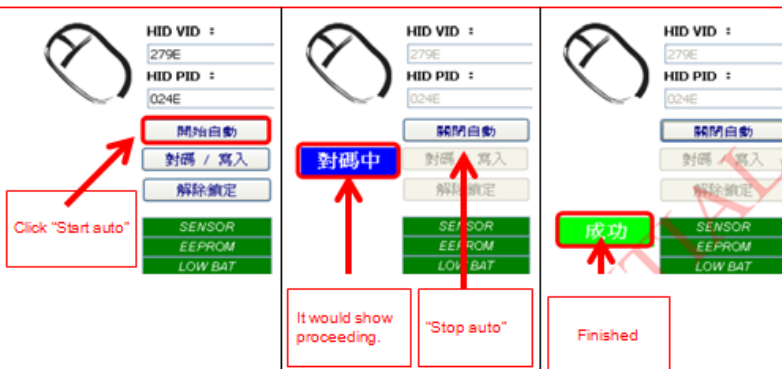
Click "Auto"

Notice: If it shows "Black" after clicking "Start auto" that means receiver or your USB port is broken.



Step 4: When you click "Start auto", you have to turn on the mouse switch within 10 seconds.  
If you want to stop binding the mouse,  
Press "stop auto".

Step 4-1:Open Tool, click "auto start". Step 4-2:Show proceeding. Step 4-3:Turn on mouse switch within 10 seconds after you press auto start



Notice:Shows "Green light" stand for you have paired the mouse successfully.

## To bind the mouse.(Only for mouse LED is Blue color and receiver is smaller one)

Please replug the receiver first. Press the middle scroll + right button at the same time in ten seconds, the receiver and mouse will be connected automatically.

## To bind the keyboard( for S/N# from XP16S4911001 to XP16S4A26000 )

S/N#
XP16S4911001-XP16S4912000
XP16S4917001-XP16S4919000
XP16S4A18001-XP16S4A19000
XP16S4A25001-XP16S4A26000

(1) 開啟 Tool

按下開始自動選項



Step1:  
Click "Auto"

Step2: Press "ESC" and "+"=" Keys at the same time continually. If you succeed, it would display success.



\*After you click "Auto", you have to press "ESC" and "+"=" Keys within 10 seconds.

Success

"ESC" and "+"=" Keys



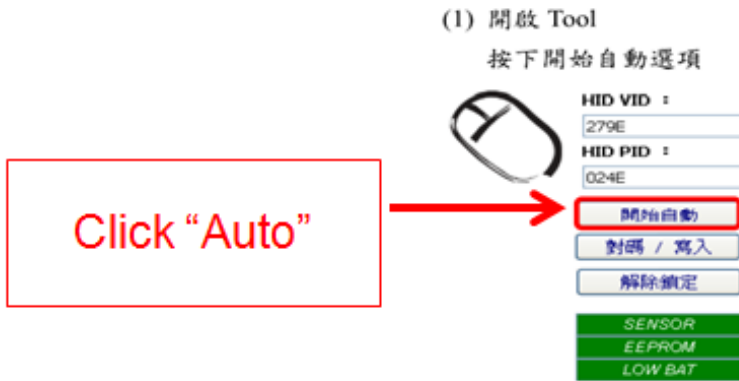
## To Bind Keyboard(for S/N# from XP17S4212001 to XP17S4215000 or XP17S4215000 later)

It doesn't need any program. Please follow below methods.

A: Replug usb dongle into USB slot.

B: Press "ESC" and the left "Shift" together then put battery into keyboard at the same time, then confirm the LED flash 3 times is pairing "OK".

### To bind the keyboard(for others S/N# )



Step2: Press "ESC" and "Shift" Keys at the same time continually. If you succeed to bind the keyboard, program would display success.



#### KYE Contact

Steven\_chang@geniusnet.com.tw  
nicole\_wu@geniusnet.com.tw

#### Originator

Steven Chang

#### Approved By

Olive Tsai

- **Confidentiality:** This document is only authorized for the assigned service partner and Distributor and is confidential and/or legally privileged. The document must not copy or show anyone without KYE's permission.