



KYE Systems Corporation

User's Guide

ColorPage-Vivid3X EPP Scanner

All trademarks and brand names mentioned in this publication are property of their respective owners.

©2001..KYE Systems Corp. All rights reserved. No portion of this document may be reproduced without permission.

Table of Contents

INTRODUCTION.....	1
HOW TO USE THIS GUIDE.....	2
CONVENTIONS OF THIS GUIDE.....	2
A NOTE ABOUT ICONS	3
SYSTEM REQUIREMENTS.....	4
PACKAGE CONTENTS	5
CHAPTER I. INSTALLING GENIUS COLORPAGE-VIVID3X SCANNER	6
SOFTWARE REQUIREMENTS	7
HARDWARE REQUIREMENTS.....	7
INSTALLING AND SETTING UP THE SCANNER.....	7
SOFTWARE INSTALLATION	9
INSTALLING ADDITIONAL SOFTWARE.....	9
UNINSTALLING THE SCANNER.....	9
CHAPTER II. USAGE AND MAINTENANCE	10
SCANNER UTILITY PROGRAM.....	11
<i>Connection Status</i>	12
<i>Aligning the Scanner</i>	12
<i>Lamp Control</i>	13
SCANNING.....	14
<i>Scan and Image Editing</i>	14
CHAPTER III. HOW TO USE QUICK FUNCTION BUTTONS	16
SCAN BUTTON	17
CUSTOMIZE BUTTON.....	18
<i>"E-MAIL"</i>	18
<i>"WEB"</i>	19
<i>"OCR"</i>	19
<i>"COPY"</i>	20
<i>"FAX"</i>	20
<i>"FILE"</i>	20
MAINTENANCE.....	22
APPENDIX A: SPECIFICATIONS.....	23
APPENDIX B: CUSTOMER SERVICE AND WARRANTY.....	24
STATEMENT OF LIMITED WARRANTY.....	25
FCC RADIO FREQUENCY STATEMENT	26
CONTACTING GENIUS.....	27

Introduction

Welcome to the world of Genius ColorPage–Vivid3X EPP scanners, the ultimate in imaging. Your new scanner will improve the professionalism of your day-to-day computing tasks by allowing you to input images and electronic text into your computer system.

Like all of our products, your new scanner is thoroughly tested and backed by our reputation for unsurpassed dependability and customer satisfaction.

Please remember to register your scanner via Genius' Web Site. As long as you complete the registration, you are one of our Genius Club members and will receive on-going Genius new product and updated driver information from time to time.

The last page of this user's manual provides more information for contacting Genius Service Center. Please feel free to contact us or visit GeniusLife Homepage (<http://www.geniusnet.com.tw>) for getting better service.

Thank you for choosing Genius Product. We hope you will continue to turn to us for additional quality products as your computing needs and interests grow.

How to Use This Guide

This User's Guide provides instructions and illustrations on how to install and operate your scanner. This guide assumes the user is familiar with the Microsoft Windows 98/Me/2000. If this is not the case, we suggest you learn more about Microsoft Windows by referring to your Microsoft Windows manual before using your scanner.

The Introduction section of this manual describes the box contents and minimum computer requirements to use this scanner. Before you start installing your Genius ColorPage-Vivid3X, please check the box contents to make sure all parts are included. If any items are missing, please contact the vendor where you purchased your scanner or the Genius Service Center directly at one of the locations listed on the last page of this manual.

Chapter I, Setting Up Your New Genius ColorPage-Vivid3X EPP Scanner, describes how to install scanner's programs and connect the scanner to your computer.

Chapter II describes how to test, maintain and clean your scanner. It also describes how to use the Scanner Utility Program, which helps you troubleshoot and fix connection problems, which may have occurred during the scanner installation.

Chapter III contains some basic descriptions on how to use your scanner. More detailed descriptions can be found by using the Help function in the relevant scanner programs. Appendix A contains Genius's limited warranty agreement and FCC statement concerning the product.

Conventions of this Guide

Bold — Important note or first use of an important term in a chapter.

ALL CAPS — Represents commands or contents on your computer screen.

A Note about Icons

This guide uses the following icons to point out information that deserves special attention.



Danger

Danger: A procedure that must be followed carefully to prevent injury, or accidents.



Caution

Caution: Information that, if not followed, may result in data loss or damage to the product.



Attention

Pay Special Attention: Instructions that are important to remember and may prevent mistakes.

System Requirements

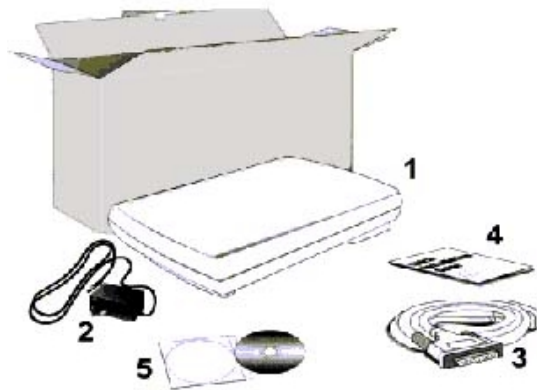
- Windows/Intel Compatible Personal Computer
- Pentium CPU or above
- CD-ROM Drive
- 64 MB RAM (128 MB Recommended)
- 160 Free Hard Disk Space (260 MB Recommended)
- Print Port
- Microsoft™ Windows 95/98/Me · Windows NT Workstation 4.0, Windows 2000.
- Video card that supports 16-bit color or greater

Package Contents

1. Scanner
2. Power Adapter (24V 550mA)
3. Scanner Cable
4. Quick Installation Guide
5. CD-ROM in 1 pcs

Setup / Application CD-ROM includes the following application programs:

- Scanner Setup Program
- Genius TWAIN Program
- NewSoft PageManager Program (Photo/image management software)
- NewSoft ImageFolio (Imaging Editing Software)
- BridgeWell Page abc (Web Editing Software)
- NewSoft Mr. Photo (Web Editing Software)
- ABBYY FineReader Sprint 4.0 (Text Recognition Software)
- This User's Guide (Electronic Version)



Chapter I. Installing Genius ColorPage-Vivid3X Scanner

Before installing your scanner, please verify that you have all of the proper components. A list of the package contents is provided page 5 of this guide.

Software Requirements

Genius ColorPage-Vivid3X comes with scanner body, scanner's install driver, Genius TWAIN program, NewSoft PageManager program, NewSoft ImageFolio image-editing software, NewSoft Mr. Photo photo management software, ABBYY FineReader Sprint 4.0 OCR software, BridgeWell Page abc web editing software. All of these programs use approximately 160 megabytes of hard disk space after installing into your computer. To ensure ample room for the installation, as well as for scanning and saving images, a minimum of 260 megabytes of hard disk space is recommended.

Hardware Requirements

Genius ColorPage-Vivid3X connects to your computer through an Enhanced Parallel Port (EPP) or Extended Capabilities Port (ECP). The scanner's EPP and ECP interface allows you to scan information into your computer without the need to use an interface card. The majority of Pentium™ computers support EPP or ECP. Once your computer's printer port does not support EPP or ECP, or if you wish to use additional parallel port pass-through devices such as removable drives etc., then it is recommended that you purchase an additional parallel port interface card that supports EPP or ECP technology to maximize your scanner's performance.

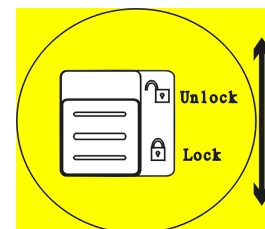
Installing and Setting up the Scanner

Please follow the step-by-step procedures described below to install the Genius ColorPage-Vivid3X scanner.

VERY IMPORTANT

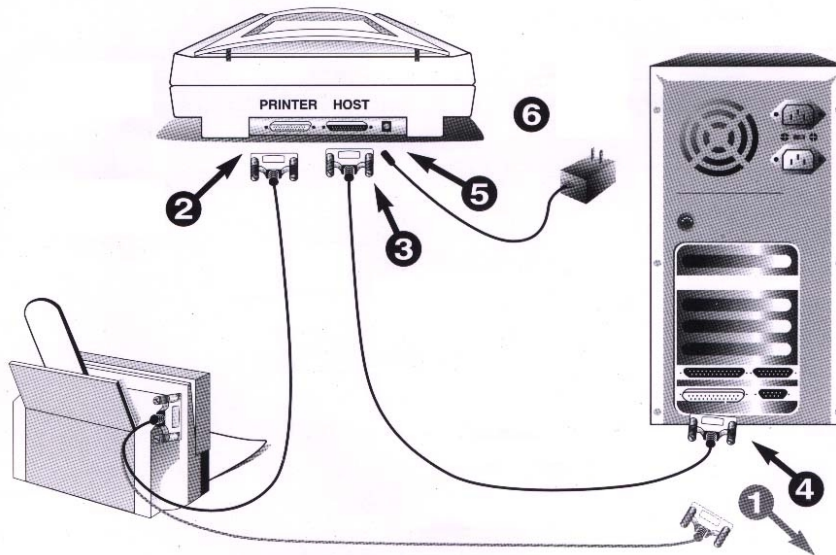
Unlock Your Scanner First

To unlock the scanner, move restraint located on the rear of the scanner toward the unlock position. If you need to transport the scanner, please lock it to prevent any scanner damage. For best image quality, be sure the cover is closed before scanning.



- Before you begin, please disconnect power from the computer and all its peripherals.
- 1. If you have a printer connected to your computer, disconnect its cable from the computer's printer port.
- 2. Plug the disconnected cable into the rear of the scanner marked PRINTER.

3. Eliminate any ESD (Electro Static Discharge) from the scanner cable by touching its metal connector to any portion of your computer. Then, plug the female end of the scanner cable into the back of the scanner marked HOST.
4. Plug the male end of the scanner cable into the computer's printer port.
5. Plug the power adapter into the scanner's power receptor.
6. Plug the power into an A/C power outlet. Reconnect power to the computer and its peripherals.



Attention: If you do not have a printer connected to your computer or you are not sure where the parallel printer port is, see your computer's information book and locate the section that refers to the parallel port, printer port or LPT1.



Attention

Note: Because your printer and scanner share the same port, you will not be able to scan and print simultaneously. Your computer will wait for any scanning processes to be finished before it begins printing and vice-versa.

Note: Your printer no longer plugs directly into your computer. Instead, it plugs into the pass-through port on the scanner which plugs into the computer. This is called a daisy-chain. Your printer and scanner will now share the same port and the same cabling. Because of this, you will not be able to scan and print simultaneously. Your computer will wait for any scanning processes to be finished before it begins printing and vice-versa.

Software Installation

The installation program called SETUP.EXE on the installation CD-ROM must be run from within Microsoft Windows. Once Windows is running on your system, please follow the steps below to properly install the software:

1. Insert the Setup/Application CD-ROM which was enclosed in your scanner set, into your CD-ROM drive.
2. The auto-run sequence will begin.
3. Follow the on-screen instructions carefully to properly install the scanner's software into your

Installing Additional Software

Your scanner is TWAIN compliant and functions with virtually all available TWAIN compatible program. If you purchase additional program to be used with your scanner, please make sure that it conforms to the TWAIN standard.

Uninstalling the Scanner

Windows 98/Me/2000 provides an Uninstall Wizard for uninstalling your scanner software driver and application programs:

Uninstall from the “Start Menu” (Uninstall Wizard)

1. From the Windows Start menu, select Programs, followed by the name of your scanner.
2. From the drop-down menu, select Uninstall.
3. A window will pop up, asking you to confirm the deletion of the selected application and all of its components. Click OK and the UninstallShield program will run automatically and delete the scanner software driver.
4. Once completed, restart Windows.

Chapter II. Usage and Maintenance

Scanner Utility Program

The Scanner Utility Program can help you get your new scanner up and running. In addition, it contains a number of other features to help you tailor and control the scanner.

Most significantly, the Scanner Utility Program checks to make sure that the scanner software is properly installed and the scanner and computer are communicating with each other.

Two other features of the Scanner Utility program are **the scanning lamp controls** and **the scanning position alignment utility**. The Scanner Utility allows you to turn the scanning lamp on and off, and define an idle time for the scanning lamp to automatically turn itself off. Also, it allows you to define the exact position on the scanning glass where scanning will begin. The scanner lock was designed to hold the scanning lamp in place during shipping, but some refinement of the initial scanning position may still be necessary.

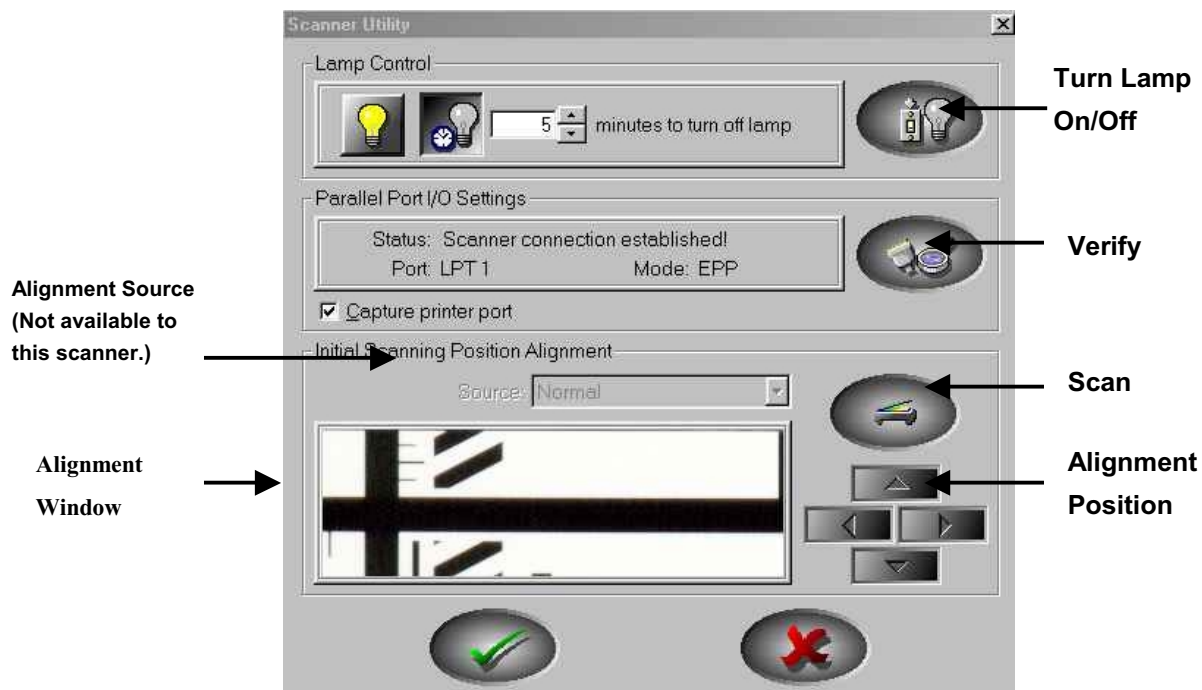


Figure 6. Scanner Utility



Attention

The Scanner Utility program does NOT affect the quality of scanned images. It is only used to establish a connection with the scanner. Settings that affect the scanned image (i.e., color, size, readability, clarity, etc.) can be found in the scanner software programs and especially the TWAIN interface.

Connection Status

The first step to take when troubleshooting connection problems with your scanner is to check all physical connections. Make sure your scanner is plugged in and the cable is fit snugly into the rear of your scanner and computer.

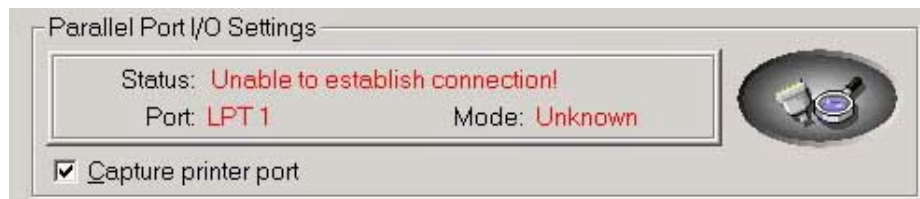
Secondly, determine the status of your hardware and software configuration. To do this, please run the Scanner Utility program as described below:

1. Click on the START button, then choose PROGRAMS, ColorPage-Vivid3X and then SCANNER UTILITY.
2. Once the Scanner Utility window is open, locate and click on the button shown below:



This will check the status of your hardware and software configuration.

3. If there is a problem with the installation, the following message will appear:



4. If the connection is OK, the following window will be displayed:



Aligning the Scanner

In most cases, the scanner doesn't need to be aligned but there are instances when the alignment might be required. You need to align the scanner only if parts of the scanned document are missing from any of its edges. For example, the heading of a document might be missing from the top edge after the document has been scanned.

To align the scanner, follow the steps below:

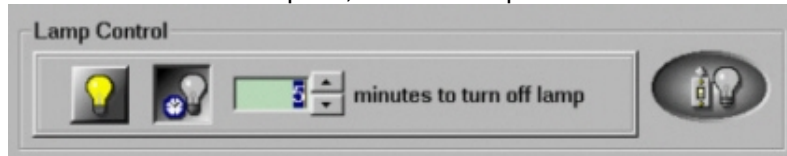
1. Place a photograph on the top right side of the scanner glass (near the back of the scanner). Please note that only part of the photograph will be scanned.
2. Click on the SCAN button. *Part* of the photograph will be displayed in the ALIGNMENT window.

3. Click on the ALIGN POSITION buttons until the top left corner of the scanned photograph aligns with the top left corner of the preview window.
4. Click on the check mark button when the alignment has been completed.

Lamp Control

The scanner's lamp may be turned ON and OFF manually in the Scanner Utility program. While there, you can also set a timer to turn the lamp off after the scanner has been idle for a designated amount of time.

To do this, click on the Windows START button and choose PROGRAMS, ColorPage-Vivid3X, SCANNER UTILITY. In the window that opens, find the Lamp Control section shown below:



Click on the On/Off switch at the far right of the section to immediately turn the scanning lamp on or off.

You may also set the default time for the lamp to automatically turn off after a scan by clicking the up or down arrows next to the area that reads "minutes to turn off lamp."

Scanning

Genius ColorPage-Vivid3X scanner is able to scan from small size document (such as business cards) to A4-sized magazines. However, some programs have limitations as to the information they can handle. The capacity of the computer's memory, or free hard disk space, can also limit the physical size of the document that you scan.

Scan and Image Editing

ColorPage-Vivid3X scanner provides two different ways for scanning:

From "SCAN" Hotkey --

1. Open the paper cover and place a picture face down onto the scanner glass and close the paper cover.
2. Pressing the "Scan" hot key button on the front site of scanner body.
3. The **Presto! PageManager** software will be launched, then **Genius TWAIN** window will appear and starts to automatically scan. (refer to Figure 9. Genius TWAIN)
4. You may select the appropriate scan mode and resolution. To Scan, click the **SCAN** button from **Genius TWAIN** window.
5. The scanned image will be saved into **PageManager** software while completing scan.
6. You may click the **CLOSE** button to close the **Genius TWAIN** window and review the scanned image under the folder of **INBOX** in **PageManager** software.

From image-editing software --

1. Open the paper cover and place a picture face down onto the scanner glass and close the paper cover.
2. Open **NewSoft ImageFolio LE** or other within image-editing software.
3. Open the **Genius TWAIN** window.

Choose "**Select Source**" in the File menu → the Select Source dialog appears → Select the name of the scanner "**Genius ColorPage-Vivid3X**" → The dialog box closes → Choose **Acquire** in the File menu, and the **Genius TWAIN** window opens.

4. Select the appropriate scan mode and resolution. To Scan, click the **SCAN** button. To preview image, click the **PRESCAN** button.
5. When scanning completely, click the **CLOSE** button to close the **Genius TWAIN** window, process and view the image.

If an image appears on your screen, your scanner is working properly. If the image doesn't appear to your liking, don't worry. You only need to adjust some settings in the **Genius TWAIN**

window. To learn how to adjust scanner settings, please refer to the Genius Help by clicking on the Help button in the Genius TWAIN window.

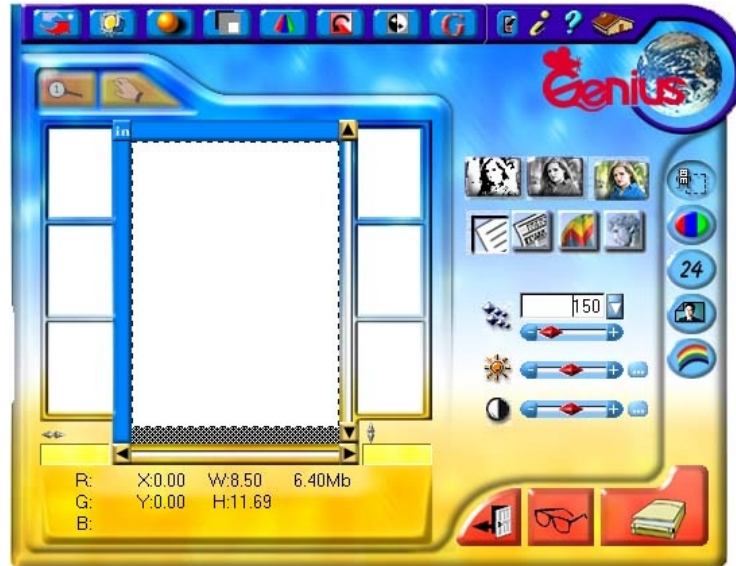


Figure 9. Genius TWAIN Interface

Chapter III. How to Use Quick Function Buttons

ColorPage-Vivid3X provides two quick function buttons: “Scan” and “Customize”.

Scan Button

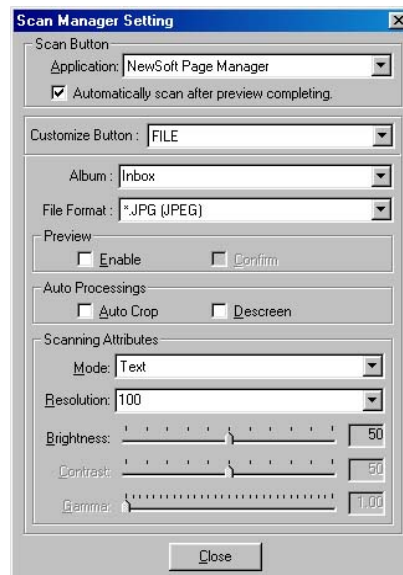
Scan button provides one touch scanning function. To press this Scan Button, Image Editing Program will be launched and Genius TWAIN program will be processing to scan.

■ **Note:**

1. The automatically scan and file saving function is only to work under **“NewSoft Presto! PageManager”**.
2. Make sure to install **“NewSoft Presto! PageManager”** software before you using the Scan hotkey.

■ **To set up NewSoft Presto! PageManager as the default Application Program**

1. Open the **“Scan Manager Setting”** window by double-clicking the ICON of **“KYE Scan”** from system tray. Or click on mouse RIGHT button and enter **“Setting”**
2. Click on the **“Scan”** ICON in the **“Scan Manager Setting”** window.
3. Choose **“NewSoft PageManager”** as the application Program in drag-down menu.
4. To select automatically scan after preview for flatbed scanning, if necessary.
5. Click on **“Close”** to complete setting.

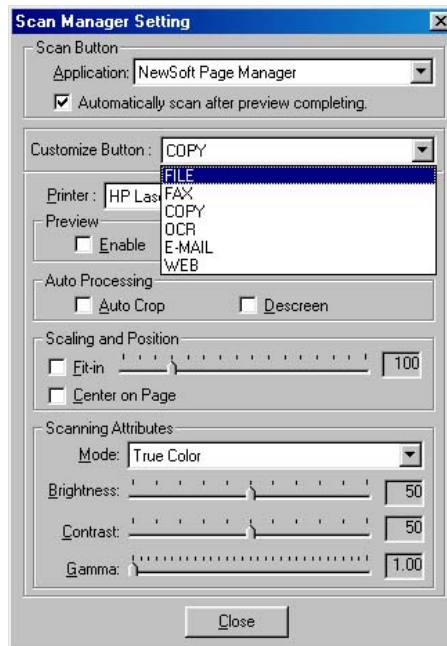


■ **To use Scan Button**

1. Place a document or picture face down on the scanning glass.
2. Press the **“Scan”** Button
3. **“PageManager”** Window displayed
4. **“Genius TWAIN”** displayed
5. Automatically scanning
6. Automatically saving file under the folder of **“INBOX”** in **“PageManager”** software.

Customize Button

You can make the button to function as you need through a customized setting from Scan Manager. There are four functions to be chosen: 「FILE」、 「FAX」、 「COPY」、 「OCR」、 「EMAIL」、 「WEB」。



"E-MAIL"

■ Note

To use "**Email button**", please make your "**Email program**" as the default application before you using the Email button.

■ To set up "Scan to Email" function

1. Open "**Scan Manager Setting**" window by double-clicking the ICON of "**KYE Scan**" from system tray. Or click on mouse RIGHT button and enter "**Setting**".
2. Choose "**Email**" in drag-down application menu.
3. To adjust or select proper scanning attributes for scanning Reflection Object, if necessary.
4. Click on "**Close**" to complete setting.

■ To use "Scan to Email" function

1. Place a document or picture face down on the scanning glass.
2. Press the "Customize" Button
3. Automatically scanning

4. Automatically saving image file and transfer image file as an attachment of new mail in Email software.

"WEB"

To use "**Web button**", please make "**BRIDGEWELL Page abc**" as the default application before you using the Web button.

■ To set up "Scan to Web" function

1. Open "**Scan Manager Setting**" window by double-clicking the ICON of "**KYE Scan**" from system tray. Or click on mouse RIGHT button and enter "**Setting**"
2. Choose "WEB" in drag-down application menu.
3. To adjust or select proper scanning attributes for scanning Reflection Object, if necessary.
4. Click on "**Close**" to complete setting.

■ To use "Scan to Web" function

1. Place a document or picture face down on the scanning glass.
2. Press the "**Customize**" Button
3. Automatically scanning
4. Automatically saving image file and transfer image file into "**Page abc**" Web Editing software.

"OCR"

Please install and set up **ABBYY FineReader Sprint 4.0** OCR software before you using this function.

■ To set up Editor

1. Open "**Scan Manager Setting**" window by double-clicking the ICON of "**KYE Scan**" from system tray. Or click on mouse RIGHT button and enter "**Setting**".
5. Choose "OCR" in drag-down application menu.
2. Choose your word processor by drag-down Editor menu.
3. To adjust or select proper scanning attributes for scanning Reflection Object, if necessary.
4. Click on "**Close**" to complete setting.

■ To use "Scan to OCR" Function

1. Place a typewritten text document face down on the scanning glass.
2. Press the "**Customize**" Button
3. Scanner starting to automatically scanning
4. Choose "**Yes**" or "**No**" for Next Page to do OCR.
5. Word processing software will be launched and recognized Text will be transfer to default word processing software.

"COPY"

Please install and set up printer driver before using this function.

■ To set up Printer

1. Open "**Scan Manager Setting**" window by double-clicking the ICON of "**KYE Scan**" from system tray. Or click on mouse RIGHT button and enter "**Setting**".
2. Choose "Copy" in drag-down application menu.
3. To adjust or select proper scanning attributes for scanning Reflection Object
4. Click "**Close**" to exit Scan Manager Setting

■ To use "Scan to Copy" Button

1. Place a document or picture face down on the scanning glass.
2. Press the "**Customize**" Button
3. Scanner starting to automatically scan
4. Choose "**Yes**" or "**No**" for Next Page to Copier
5. Copying

"FAX"

To use Fax button function, please install **PC Fax** software before setting Fax button.

■ To set up PC Fax software

1. Open "**Scan Manager Setting**" window by double-clicking the ICON of "**KYE Scan**" from system tray. Or click mouse RIGHT button and enter "**Setting**".
2. Choose "Fax" in drag-down application menu.
3. To adjust or select proper scanning attributes for scanning Reflection Object.
4. Click "**Close**" to complete setting.

■ To use "Scan to Fax" function

1. Place a document or picture face down on the scanning glass.
2. Press the "**Customize**" Button
3. Scanner starting to automatically scan
4. Choose "**Yes**" or "**No**" for Next Page to Fax
5. Copying
6. Fax Application Window Open
7. Following the screen instruction to proceed fax transmission.

"FILE"

To use File button function, please install "**NewSoft PageManager**" before setting File button.

■ To set up File software

1. Open "**Scan Manager Setting**" window by double-clicking the ICON of "**KYE Scan**" from system tray. Or click mouse RIGHT button and enter "**Setting**".
2. Choose "File" in drag-down application menu.
3. Select the proper folder from the drag-down filing folder menu.
4. To adjust or select proper scanning attributes for scanning Reflection Object.
5. Click "**Close**" to complete setting.

■ **To use "Scan to File" function**

1. Place a document or picture face down on the scanning glass.
2. Press the "**Customize**" Button
3. Scanner starting to automatically scan
4. Choose "**Yes**" or "**No**" for Next Page to scan.
5. "**PageManager**" Window Open.
6. Scanned Image will be filed into the default folder of "**PageManager**".

Maintenance



Caution

To keep your scanner working smoothly, take a moment to review the following maintenance tips.

- Avoid using the scanner in a dusty environment. When it is not in use, keep the scanner covered. Dust particles and other foreign objects may damage the unit.
- Do not attempt to disassemble the scanner. There is danger of an electrical shock and opening your scanner will void your warranty.
- Do not subject the scanner to excessive vibration. It may damage the internal components.
- Be sure not to bump or knock the scanner glass as it is fragile and could break.
- Clean the scanner glass by lightly spraying a non-abrasive glass cleaner onto a lint-free cloth. Then, wipe the glass thoroughly with the cloth. **DO NOT SPRAY CLEANER DIRECTLY ONTO THE SCANNER GLASS.** Excess liquid residue may fog or damage the scanner.
- Your scanner operates best in temperatures between 10° C to 40° C (50° F to 104° F).

Appendix A: Specifications

General	
Physical dimensions:	415 x 258 x 95 mm
Weight:	2.2 kgs
Operating Temperature:	10° C to 40° C (50° F to 104° F)
Scan Area:	8.5 x 11.7 in. (216 mm x 297 mm)
Scan Method:	Single-Pass
Scan Mode:	36-Bit Color / 48-Bit Color for program enhancement 12-Bit Grayscale 1-Bit Line-art (Black & White)
Resolution:	Optical 600 x 1200 dots per inch (19200 program interpolated)
TWAIN	Full TWAIN Compliance
Connection:	Enhanced Printer Port
Warranty:	1 Year Warranty (from date of purchase)
Lamp type:	Cold Cathode Lamp
Power adapter:	Power Output DC 24V, 550mA
Power Consumption:	Operation – 13.2 watts maximum Idle – 6 watts
EMI:	FCC Class B

Appendix B: Customer Service and Warranty

If you encounter problems with your scanner, please review the installation instructions and troubleshooting suggestions contained in this guide.

For further assistance call our customer support phone number listed on the last page of this guide. To avoid any delay, please have the following information available before calling:

- **Scanner name and model number**
- **Scanner serial number (located at rear of scanner near port connectors)**
- **A detailed description of the problem**
- **Your computer manufacturer and its model number**
- **The speed of your CPU (Pentium 133, etc.)**
- **Your current operating system and BIOS (optional)**
- **Name of program package(s), version or release number and manufacturer of the program**



Attention

We are continuously enhancing the performance of our product drivers. To check for the updated device driver you may visit our Web Site. (Please refer to the section of “Contacting Genius” on the last page of this manual.)

Statement of Limited Warranty

This Statement of Limited Warranty applies only to the options you originally purchase for your use, and not for resale, from an authorized reseller.

The manufacturer warranty period for this product is one year from the date of Original Purchase as shown on your receipt, and includes all parts and labor. You should keep the receipt as it establishes Proof of Original purchase. You will need it to obtain warranty service.

If you transfer this product to another user, warranty service is available to that user for the remainder of the warranty period. You should give your proof of purchase to that user.

We warrant that this machine will be in good working order and will conform to its functional descriptions in the documentation provided. Upon provision of proof of purchase, replacement parts assume the remaining warranty of the parts they replace.

Before presenting this product for warranty service, you must remove all programs, data and removable storage media. Products returned without program will be replaced without program. This Limited Warranty service does not provide for carry-in exchange when the problem results from accident, disaster, vandalism, misuse, abuse, unsuitable environment, program modification, Electro Static Discharge (ESD) damage, another machine or non-vendor modification for this product.

If this product is an optional feature, this Limited Warranty applies only when the feature is used in a machine for which it was designed.

If you have any questions about your Limited Warranty, contact Genius.

THIS LIMITED WARRANTY REPLACES ALL OTHER WARRANTIES, EXPRESS OR IMPLIED, INCLUDING, BUT NOT LIMITED TO, THE IMPLIED WARRANTIES OF MERCHANTABILITY AND FITNESS FOR A PARTICULAR PURPOSE. HOWEVER, SOME LAWS DO NOT ALLOW THE EXCLUSION OF IMPLIED WARRANTIES. IF THESE LAWS APPLY, THEN ALL EXPRESS AND IMPLIED WARRANTIES ARE LIMITED IN DURATION TO THE WARRANTY PERIOD. NO OTHER WARRANTIES APPLY AFTER THAT PERIOD.

Some jurisdictions do not allow limitations on how long an implied warranty lasts, so the above limitation may not apply.

Under no circumstances are we liable for any of the following:

1. Third party claims against you for losses or damages.
2. Loss of, or damage to, your records or data; or
3. Economic consequential damages (including lost profits or savings) or incidental damages, even if we are informed of their possibility.

Some jurisdictions do not allow the exclusion or limitations of incidental or consequential damages, so the above limitation or exclusion may not apply to you.

This Limited Warranty gives you specific legal rights, and you may also have other rights that vary from jurisdiction to jurisdiction.

FCC Radio Frequency Statement

This equipment has been tested and found to comply with the limits for a Class B digital device, pursuant to part 15 of the FCC rules. These limits are designed to provide reasonable protection against harmful interference in a residential installation.

This equipment generates, uses and can radiate radio frequency energy and, if not installed and used in accordance with the instructions, may cause harmful interference to radio communications. However, there is no guarantee that interference will not occur in a particular television reception (which can be determined by turning the equipment off and on), the user is encouraged to try to correct the interference by one or more of the following measures:

- √ Reorient or relocate the receiving antenna.
- √ Increase the separation between the equipment and receiver.
- √ Connect the equipment to an outlet on a circuit different from that which the receiver is connected.
- √ Shielded interconnect cables and shielded power cord which are supplied with this equipment must be employed with this equipment to ensure compliance with the pertinent RF emission limits governing this device.
- √ Consult the dealer or an experienced radio/TV technician for help if the conditions persist.
- √ Changes or modifications not expressly approved by the manufacturer or authorized service center could void the users authority to operate this equipment.

Contacting Genius

USA & CANADA

KYE International Corp.

Latin America
Suite 110, 8400 NW 25th St.,
Miami, FLONDA 33162, U.S.A.
Tel : 305-468-9250
Fax : 305-468-9251
Web Site: <http://www.genius-kye.com>

EUROPE

KYE Systems UK Ltd.

Unit 4, 131 Beddington Lane,
Croydon, Surrey. CR0 4TD. UK
Tel : (44) 208 664 2727 (sales)
(44) 208 664 2739 (Tech. Support)
Fax : (44) 208 664 2721(sales)
(44) 208 664 2740(Tech. Support)
Web Site: <http://www.kye.co.uk>

ASIA PACIFIC

KYE Systems Corp.

No.492Chung Hsin Rd., Sec.5, San Chung, Taipei
Hsien 241, Taiwan, R.O.C.
Tel : (886) 2 2995-6645
Fax : (886) 2 2995-6649
Web site: <http://www.geniusnet.com.tw>

EUROPE

KYE Systems Europe GmbH

Karl Benz Str. 9
D-40764 Langenfeld, Germany
Tel : (49) 21 73 9743-44
Fax : (49) 21 73-9743-17
Web Site: genius@kye.me.uunet.de

ASIA PACIFIC

KYE Systems H.K. Corp. Ltd.

Unit 1701, 17th Floor, Aitken Vanson Centre, No.61
Hoi Yuen Road, Kwun Tong, Kowloon, Tong, Hong
Tel : (852)2342 3813
Fax : (852)2341 9517
Web Site: <http://www.geniusnet.com.hk>

ASIA PACIFIC

KYE Systems (M) SDN BHD

NO. 2, Jalan BK 1/12, Kinrara Industrial Park
Bandar Kinrara, 6 1/2 Miles, Jalan Puchong,
58200 Kuala Lumpur, Malaysia
Tel : (603) 575 1355
Fax : (603) 575 6362 / 6962
Web site: sales_kye@kye-systems.com.my